

OpenText TeleForm Release Notes

11.1

Product Released: 2015-02-27

Release Notes Revised: 2016-11-17



Caution

Cautions help you avoid irreversible problems. Read this information carefully and follow all instructions.



Important

Important notes help you avoid major problems.



Note: Notes provide additional information about a task.



Tip: Tips offer you quicker or easier ways of performing a task.

Contents

1	Introduction	3
1.1	Release Notes revision history	3
2	About TeleForm	3
2.1	New features.....	4
2.1.1	Email Fax Support	5
2.1.2	Support for Named Image Files in XML Export.....	7
2.1.3	Search & Replace within TeleForm Settings	8
2.1.4	License Manager	12
2.1.5	System Snapshots Now Include COM Add-Ins	14
2.1.6	Capture Metadata from Email.....	14
2.1.7	Capture Metadata from Non-Image Files	15
2.1.8	Hide Default Job for Remote Capture Station Users	17
3	Packaging and documentation.....	17
4	Supported environments and compatibility.....	17
4.1	Operating Systems	17
4.1.1	TeleForm Server Requirements	17
4.1.2	TeleForm Workstation and RCS Requirements	17
4.1.3	TeleForm Web Capture Server.....	17
4.1.4	Internet Information Server (IIS): 6.0, 7.0, 7.5.....	17
4.1.5	Web Capture Client	17
4.1.6	Microsoft SQL Server	18
4.1.7	Microsoft Office.....	18
4.1.8	VMWare.....	18
4.1.9	Citrix.....	18
4.2	Supported Fax Servers.....	18
4.3	Supported Export Formats	18
5	Installation and upgrade notes.....	19
6	Fixed issues.....	19
7	Known issues	21
8	Contact information	22

1 Introduction

These Release Notes provide an overview of TeleForm 11.1, including new features, delivery information, and supported platforms. OpenText recommends that you read these Release Notes in conjunction with the documentation included with the software package. If any conflicts exist, the Release Notes supersede the other documentation.

We also recommend that you check the OpenText Knowledge Center (<https://knowledge.opentext.com/>) for any patches or documentation updates that may have been posted after the initial release of this product.

1.1 Release Notes revision history

Revision Date	Sections Revised	Description of Revisions
2016-03-15	First release.	All new content.
November 2016	Updated release.	Release notes rebranded for OpenText acquisition.

2 About TeleForm

This section provides an overview of TeleForm 11.0.

OpenText TeleForm is a powerful solution that enables you to automatically capture, classify, and extract information from paper and electronic documents using powerful recognition technologies to create accurate, process-ready content.

Key features include:

- **Advanced design & distribution:** Create forms with embedded logic, integrate live data, and distribute by printing, faxing, emailing, and saving as PDFs.
- **Flexible capture options:** Capture documents on demand or in a batch directly from scanners and MFPs, fax, email, web browsers, and mobile devices.
- **Powerful recognition technology:** Extract information from documents with powerful OCR, handprint, barcode, checkbox, and other recognition technologies.
- **Intelligent document recognition:** Automatically identify, classify, and extract relevant data from semi-structured and non-standard documents such as invoices.
- **Seamless validation and verification:** Create business rules to validate extracted data with other systems, visually review exceptions, and correct information.

- **Automated export & processing:** Export documents and data into other systems, and feed into OpenText LiquidOffice to automate business processes.

2.1 New features

TeleForm 11.1 includes the following new features:

New Features

- **Send Email Fax:** A new connect agent that allows you to fax forms using email-based fax services like eFax. See below for more information.
- **Search/Replace function in TeleForm Maintenance & Utility Program:** For power users, this feature allows you to search and replace settings within form templates and configuration files. See below for more information.
- **XML Export now supports named image files:** The XML Export now allows you to export form images and name them based on a form field. See below for more information.
- **Capture metadata from received emails with attachments:** The Receive Email Connect Agent (released in V11.0) has been updated to support the capture of selected metadata information from the email. See below for more information.
- **Capture metadata from non-image files:** When processing non-image files using Document Templates, you can now automatically capture common metadata information about the file. See below for more information.
- **Japanese localization:** In addition to English, German, French and Brazilian Portuguese, TeleForm has now been localized for Japanese.

Other Enhancements

- **HPE Records Manager 8.3 Support:** The HP Enterprise Records Manager export has been updated to support changes introduced in the 8.3 release.
- **System snapshots now include COM Add-Ins:** When you use the TeleForm Maintenance and Utility Program to create a snapshot of your system, it will now include COM Add-Ins, allowing them to be restored with the snapshot. See below for more information.
- **License Manager Improvements:** The process of updating your TeleForm license code has been greatly simplified. See below for more information.
- **Hide Default Job for RCS Clients:** You can now prevent RCS clients from creating batches using the “default” job type. See below for more information.
- **Configurable Language IDs/Names:** For users integrating third-party recognition engines to support languages not currently supported by TeleForm, it is now possible to have

those “custom” languages appear in TeleForm along with the other languages supported by TeleForm. See the TeleForm Recognition API.xml file (installed by the TeleForm Documentation Install) for more details.

- **Form Import:** When importing forms from other TeleForm systems, the “Non-Unicode Language” list has been updated to support more languages. For form templates created before Unicode was supported in TeleForm, this setting allows you to specify the regional language on the system used to create the form template, allowing the template to be imported correctly.
- **Updated API Documentation:** The API documentation (part of the Documentation Install) has been updated to with more detail and descriptions.

Other Changes

- **Non-Image File Viewing:** Support for viewing non-image files (.doc, .xls, etc.) is no longer natively supported for new installations. When available, icons instead of thumbnails will be displayed to indicate the document type. Customers upgrading over the top of an existing TeleForm installation will retain the original functionality.
- **VBA is always enabled:** VBA is now enabled for all users and no longer needs to be enabled by the TeleForm license code.
- **IDOL OCR files are no longer installed:** TeleForm 10.8 introduced a new OCR engine and IDOL OCR is no longer used. Recent versions have continued to install IDOL OCR but only to support legacy installations. The IDOL OCR files are now no longer being installed.

Platform Support Changes

The following export formats are no longer supported:

- WorkSite MP

2.1.1 Email Fax Support

A new Send Email Fax connect agent supports the sending of faxes using email-based fax systems (such as eFax). These systems typically work by sending an email to <fax number>@<fax service.com> with the images to be faxed included in the email as attachments.

- To enable the Email Fax feature in TeleForm, when installing TeleForm select “Email Fax Support” in the Fax Options screen.
- Once installation has completed, open the Send Email Fax Connect Agent setup dialog (from Utilities->Connect Agent Setup->Send Email Fax)

- Enter the URL for your email-based fax service.

Send Email Fax

General

Fax Service

Fax enabled

Fax mail server: youremailfaxserver.com

Strip non-numeric from fax number

E-mail settings

Outbound: Not configured

Setup

OK Cancel Help

- Click on “Setup” and enter the information for your Email Server

Outbound E-mail

E-mail Send Options

Message Importance: Normal

Send Method: SMTP

Outbound mail server:

Port: 25

Sender/Reply address:

OK Cancel

- Outbound faxes can be sent by setting up a Form Merge or using the TeleForm Phone Book, where the destination fax number is specified using the “Remote_Fax” field (for Form Merges) or in the Fax field (in the Phone Book).

2.1.2 Support for Named Image Files in XML Export

The XML export add-in has been enhanced to include support for image file export. The image file can be named based on the contents of a field and the image path can be output to a data field.

■ File Export Tab

The add-in now includes a File Export Tab. This controls the output of the file prior to the export.

■ XML Export Setup

The setup dialog has been updated to include new features:

The screenshot shows the XML Export Setup dialog box. It has a light gray background and a white border. At the top, there is a 'Template' field with the text 'Custom Attributes Test'. Below this is a section titled 'XML Options' which contains a 'Option' dropdown menu set to 'Export each record to a separate file in directory', a 'Destination' text box containing 'C:\ProgramData\Cardiff\TeleForm\exp' with a browse button (...), and an unchecked checkbox labeled 'Overwrite if file exists'. Below the XML Options section is a section titled 'Image Options' which contains two checkboxes: 'Include image path in field' (unchecked) and 'Name image based on field value' (unchecked). Each checkbox has a corresponding empty dropdown menu below it. At the bottom right of the dialog are 'OK' and 'Cancel' buttons.

■ Include image path in field

When checked, the field drop-down is enabled. Enter a field name or select an existing field. The image path will be saved as the value for this field.

■ Name image based on field value

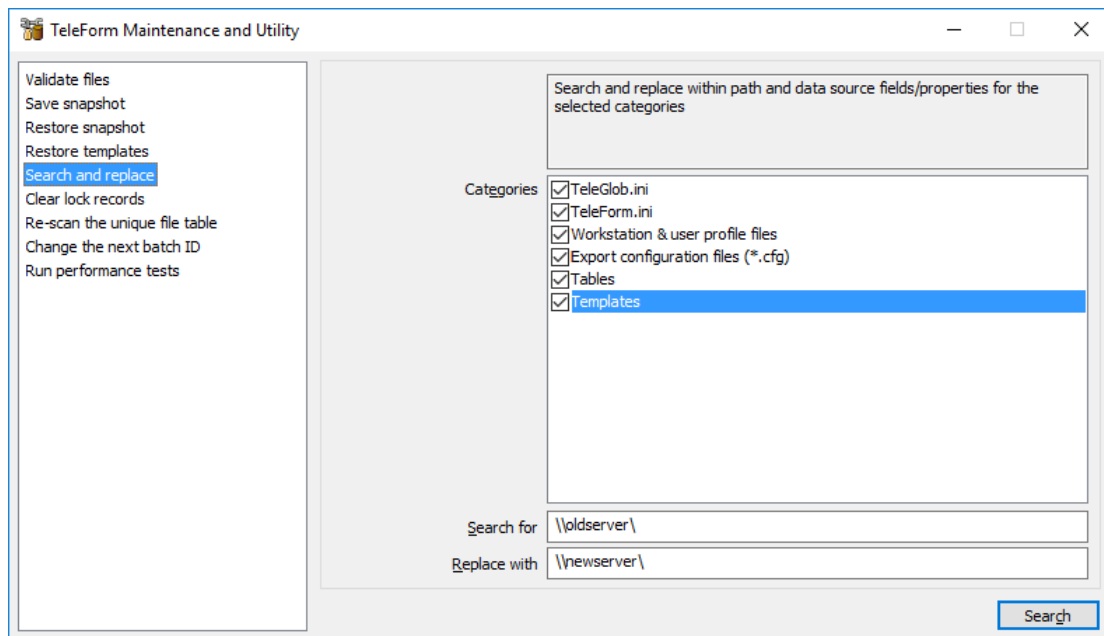
When checked, the field drop-down is enabled. The selected field will be used for the file name of the image. Some characters may be converted to “_” to keep the file name legal.

2.1.3 Search & Replace within TeleForm Settings

Introduced in TeleForm 11.1, the Search and Replace tool can be used to search for and replace strings within TeleForm tables, configuration files and templates.

1. The Search and Replace Tool

Select the “Search and replace” option from TeleForm Maintenance and Utility.



2. Categories

- a. TeleGlob.INI
Search and replace value strings in the global INI file (TeleGlob.INI)
- b. TeleForm.INI
Search and replace value strings in the local INI file (TeleForm.INI)
- c. Workstation & user profile files
Search and replace value strings in the workstation and profile files (*.wks, *.ini) in the Profiles directory
- d. Export configuration files (*.cfg)
Search and replace value strings in the configuration files associated with some export formats

e. Tables

Search and replace directory and data source strings within the tables. A data source string is a path to a file, an ODBC connection string or a custom string used by an add-in to define export parameters.

The following tables are searched:

- i. tfbatmt - Master batch table
- ii. tflogex - Log/Tracking table

f. Templates

Search and replace directory and data source strings within the templates. A data source string is a path to a file, an ODBC connection string or a custom string used by an add-in to define export parameters.

3. Search / Replace entry

- a. Search for - String to search for
- b. Replace with - Replacement string

Use caution when searching for sub-strings. Attempt to search for a larger sub-string than necessary or use bounding characters to make sure that the search does replace a coincidentally matching sub-string.

Example:

Search for	Replace with	Test String	Result	Comment
Server	Server1	\\server2\xyz.tif	\\Server12\xyz.tif	Unintended consequences
\\Server\	\\Server1\	\\server2\xyz.tif		OK – no match
\\Server\	\\Server1\	\\server\xyz.tif	\\server1\xyz.tif	OK

Use caution when performing multiple search/replace operations. The first operation may change paths that were only intended to be changed in the second operation.

4. Search Restrictions/Behavior

a. Blank strings

Blank strings are not allowed. The Search button is grayed until the Search for and Replace with strings have been entered.

b. Passwords

“PWD=”, “PWD” are not allowed as search strings because they could be used to search for all passwords used in data sources (i.e. in ODBC connection strings).

If using the tool to replace a password, enter the old password as part of the search parameter (i.e. “PWD=01dpa55;”).

Search for blank passwords using “PWD=;”

c. Read-only search

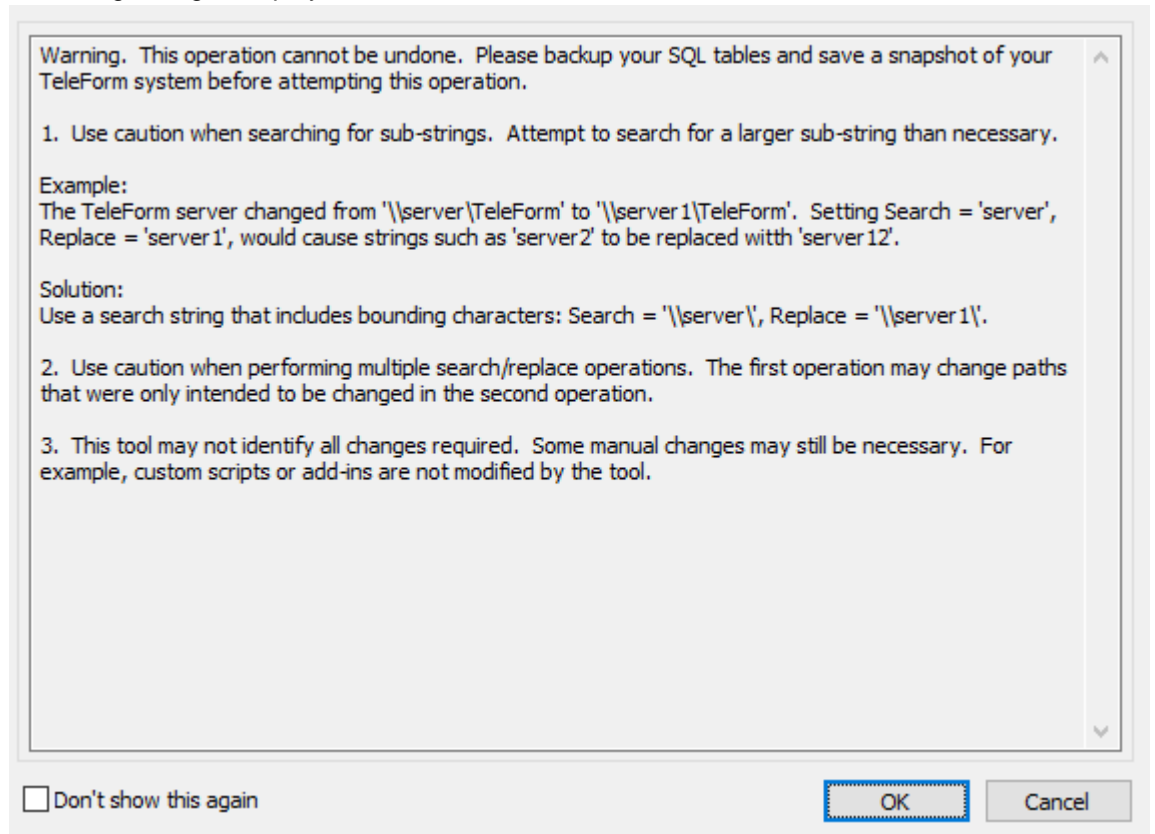
Use identical strings in the “Search for” and “Replace with” entries to perform a “read-only” search. A confirmation dialog will be displayed. The replace option will be grayed in the results dialog.

5. **Search**

Click the Search button to start the search.

Note: No changes are made until the search is complete and the user confirms the changes.

a. A warning dialog is displayed.



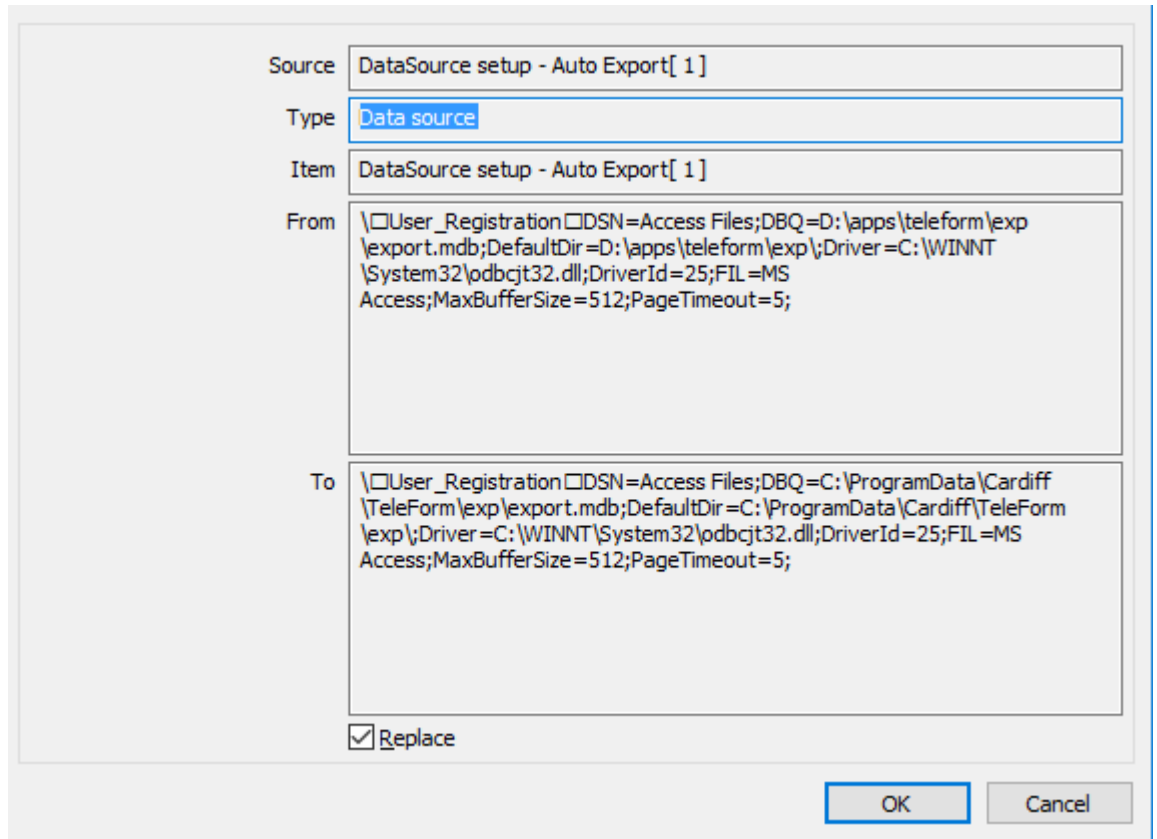
- b. A progress dialog is displayed while the search is performed, then the results are displayed.

Type	Item	From	To	Items
<input checked="" type="checkbox"/>	Template	Choice - No comment		1
<input checked="" type="checkbox"/>	Template	Dynamic Fill Test		1
<input checked="" type="checkbox"/>	Template	Fruit - Dictionary Test		1
<input checked="" type="checkbox"/>	Template	Image Zone Test		1
<input checked="" type="checkbox"/>	Template	lookup testX		1
<input checked="" type="checkbox"/>	Template	NPDATA18		1
<input checked="" type="checkbox"/>	Template	Smart Form Ver 5 1.6		1
<input checked="" type="checkbox"/>	Template	User Registration Form		1

Double click an item to view details. Un-check items to skip.

Close

- i. Uncheck an item to skip the replace.
- ii. Double click an item to see the detail. Multiple levels of detail are often available. The individual change can be viewed in the Search/Replace item dialog.

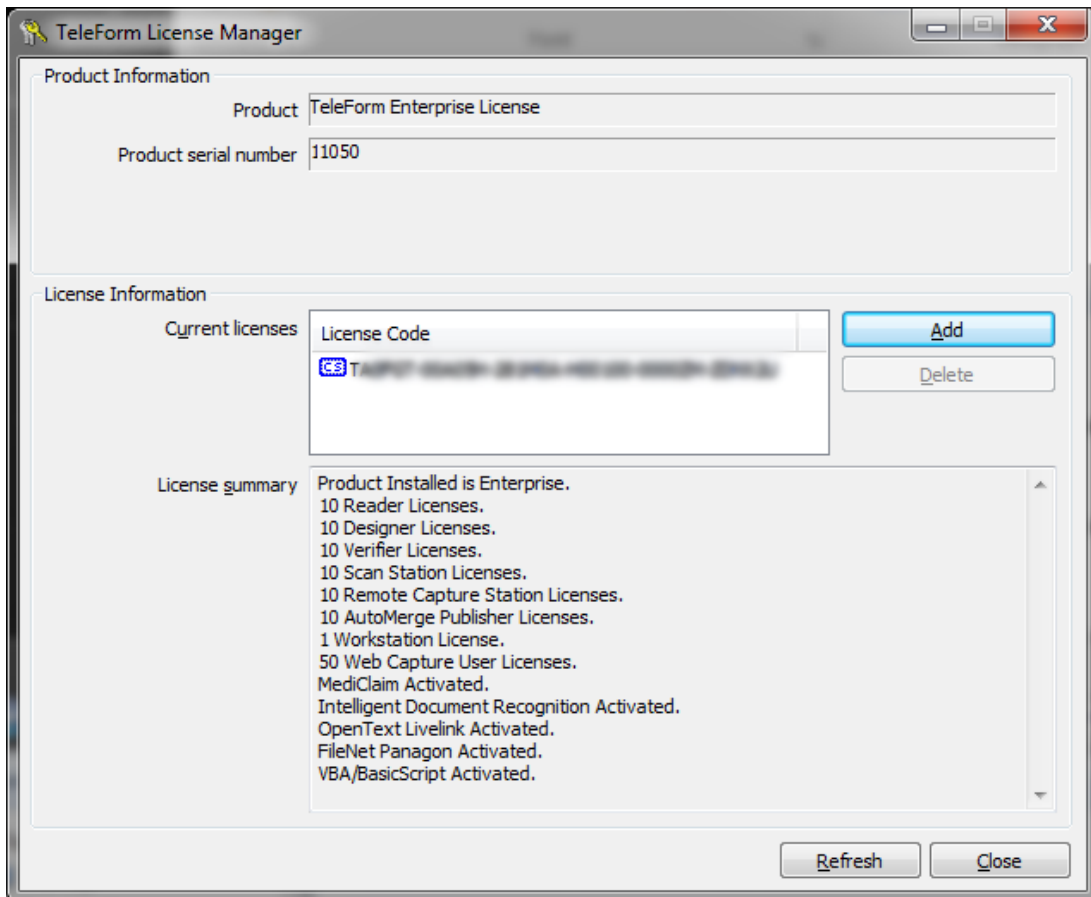


- iii. Review changes to ensure that the changes are correct
- c) Only the top level results dialog has the Replace button. Click Replace to start the making the changes. Another confirmation dialog will be displayed.

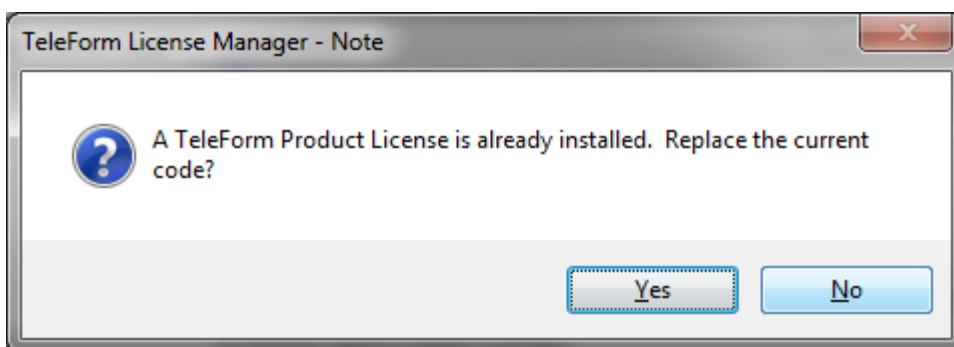
2.1.4 License Manager

TeleForm License Manager has been updated to increase usability and reduce confusion when updating license codes.

- Application now shows all license information upon application startup:



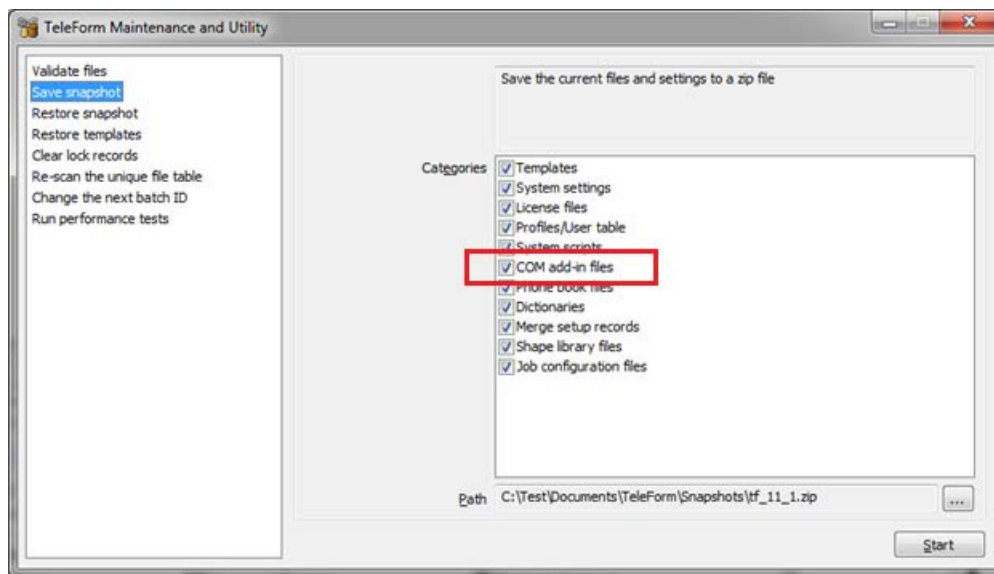
- To upgrade/replace a TeleForm license code, all you need to do is click “Add” and enter the new code. If a code of the same type already exists, you will be asked to confirm that you want to replace the existing code with the new code.



- The new license information screen is resizable, allowing you to see all of the license information at a glance.

2.1.5 System Snapshots Now Include COM Add-Ins

There is now an option to include your COM add-in files in system snapshots taken using the TeleForm Maintenance and Utility application.



2.1.6 Capture Metadata from Email

When receiving images using the Receive Email Connect Agent, you can now automatically capture selected metadata values from the email by creating fields in your form template with the appropriate field names. The following metadata properties can currently be captured by creating batch-level System Fields with the specified field names.

TeleForm Batch-Level System Field Name	MAPI Property Name	Example
MAIL_SENDER_EMAIL	PR_SENDER_EMAIL_ADDRESS	/O=OT/OU=EXCHANGE ADMINISTRATIVE GROUP /CN=RECIPIENTS/CN=JOHN.SMITH@opentext.com or john.smith.opentext.com
MAIL_SENDER_ADDRTYPE	PR_SENDER_EMAIL_ADDRTYPE	EX or SMTP
MAIL_SENDER_NAME	PR_SENDER_NAME	Smith,John
MAIL_CREATION_TIME	PR_CREATION_TIME	5/1/2015 06:10:04.212 PM
MAIL_DELIVERY_TIME	PR_MESSAGE_DELIVERY_TIME	5/1/2015 06:10:04.212 PM
MAIL_SUBJECT	PR_SUBJECT	Fax message from (888)555-5555
MAIL_IMPORTANCE	PR_IMPORTANCE	1

TeleForm Batch-Level System Field Name	MAPI Property Name	Example
MAIL_SENSITIVITY	PR_SENSITIVITY	0
MAIL_STORE	(recipient mail store name)	tom.jones@opentext.com
MAIL_RECV_FOLDER	(received from mail folder)	Inbox\Faxes
MAIL_RECV_EMAIL	PR_RECIEVED_BY_EMAIL_ADDRESS	/O=OT/OU=EXCHANGE ADMINISTRATIVE GROUP/CN=RECIPIENTS/CN=TOM.JONES@opentext.COM
MAIL_RECV_ADDRTYPE	PR_SENDER_EMAIL_ADDRTYPE	EX or SMTP
MAIL_TO_LIST	PR_DISPLAY_TO	Jones, Tom; Smith, Bob; Doe, Mary
MAIL_CC_LIST	PR_DISPLAY_CC	Jones, Fred; Smith, Jack; Doe, Ann

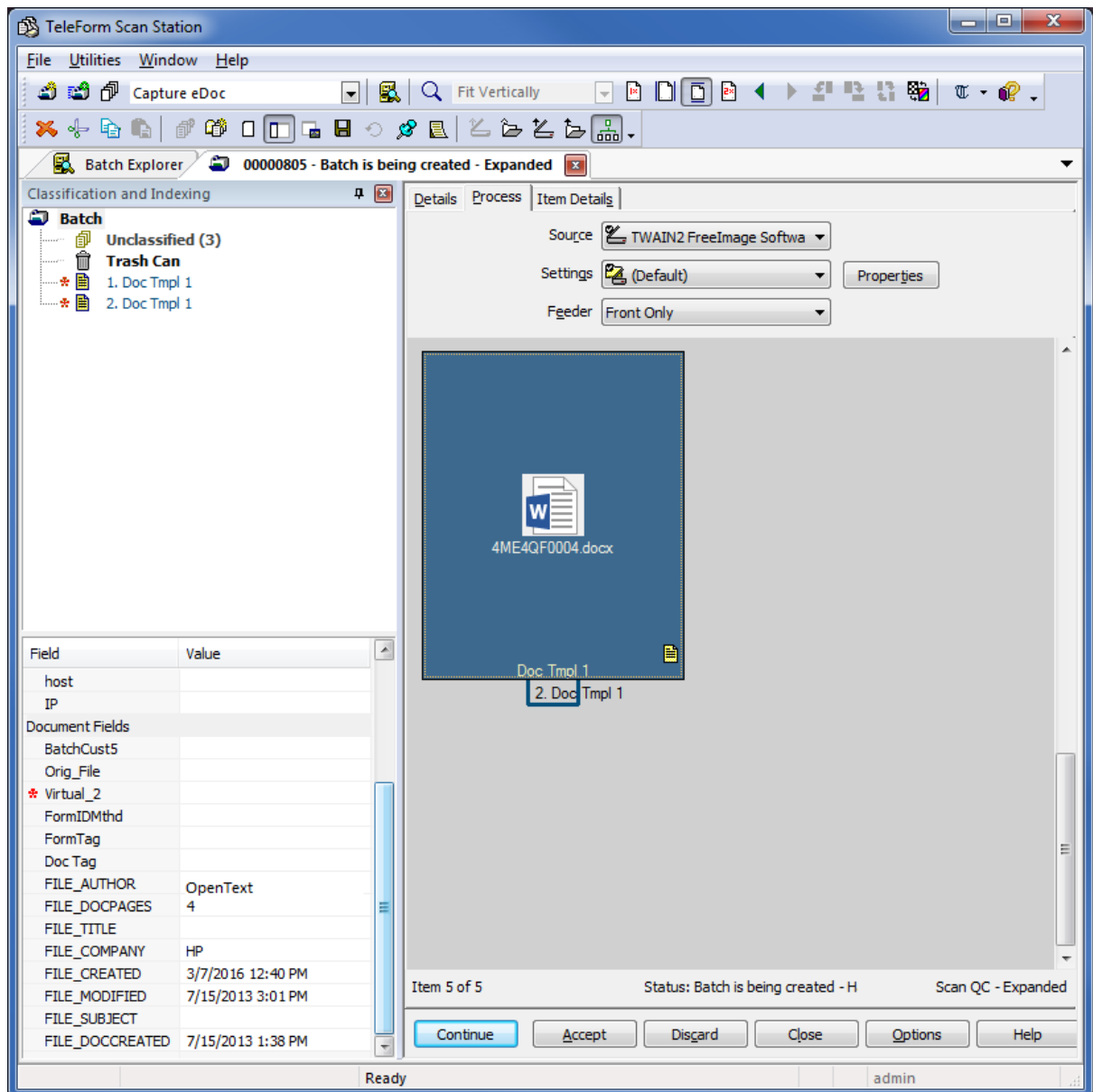
2.1.7 Capture Metadata from Non-Image Files

When processing non-image files using Document Templates (in particular, Microsoft Office documents), you can automatically capture selected metadata items from those documents by creating document fields with the appropriate field names. The following metadata properties can currently be captured using the specified field names:

- "FILE_AUTHOR" – Author
- "FILE_KEYWORDS" – Keywords
- "FILE_COMENT" - Comment
- "FILE_TITLE" - Title
- "FILE_COMPANY" – Company
- "FILE_ITEMTYPE" - Item type, I.E. "Microsoft Word Document"
- "FILE_SUBJECT" - Subject
- "FILE_MODIFIED" - Date modified
- "FILE_DOCREATED" - Document content date created
- "FILE_DOCREV" - Document revision number
- "FILE_DOCPAGES" - Document page count
- "FILE_DOCWORDS" - Document word count

Note 1: Not all metadata is available for any given file.

Note 2: Some metadata exists in the document and can only be extracted if the document's application is installed.



2.1.8 Hide Default Job for Remote Capture Station Users

If the “Hide Default Job” setting in Utilities->Configuration->Configuration Options is enabled, it will hide the default job for both local Scan Station operators as well as Remote Capture Station (RCS) users.

3 Packaging and documentation

Downloads and documentation for TeleForm are available on the OpenText Knowledge Center (<https://knowledge.opentext.com/>).

4 Supported environments and compatibility

This section provides details about supported platforms, systems, and versions.

4.1 Operating Systems

4.1.1 TeleForm Server Requirements

- Microsoft Windows Server 2012 R2
- Microsoft Windows Server 2008 R2

4.1.2 TeleForm Workstation and RCS Requirements

- Microsoft Windows 10
- Microsoft Windows 8
- Microsoft Windows 8.1
- Microsoft Windows 7 (SP1) 32-bit or 64-bit

4.1.3 TeleForm Web Capture Server

- Microsoft Windows Server 2012 R2
- Microsoft Windows Server 2008 R2

4.1.4 Internet Information Server (IIS): 6.0, 7.0, 7.5

- .NET: .NET Framework 4.0 (installed automatically if required), Web Services Enhancements for Microsoft .NET (WSE)

4.1.5 Web Capture Client

- Microsoft Windows 10
- Microsoft Windows 8
- Microsoft Windows 8.1

- Microsoft Windows 7 (SP1) 32-bit or 64-bit)
- Microsoft Internet Explorer 9, 10 or 11

4.1.6 Microsoft SQL Server

- Microsoft SQL Server 2014
- Microsoft SQL Server 2012
- Microsoft SQL Server 2008 (64-bit)
- Microsoft SQL Express 2008 (if installed by TeleForm for single-user systems)

4.1.7 Microsoft Office

- Microsoft Office 2013

4.1.8 VMWare

- VMWare Server ESX version 4 and higher
- Reader and AutoMerge Publisher only are supported for production use.

4.1.9 Citrix

- XenApp 6
- XenApp 7

4.2 Supported Fax Servers

- RightFax 10.x
- RightFax 9.x

4.3 Supported Export Formats

- HPE Records Manager 8.1
- WorkSite 8.5, 9.0
- XML
- ODBC
- Capture to Directory
- CSV/DEL
- Microsoft Access
- OpenText Process Automation (aka LiquidOffice)
- Excel

- SPSS

5 Installation and upgrade notes

If you are installing the TeleForm for the first time, follow the instructions in the *TeleForm Getting Started Guide*.

If you are upgrading or migrating an existing TeleForm server, follow the instructions in the *TeleForm Administration Guide*.

6 Fixed issues

This section provides information about past issues that have been fixed in this release. (May Release)

Issue Number	Issue Description
TF-8103	Reinstall of TeleForm incorrectly defaults to RightFax V9 instead of RightFax V10
TF-8179	Exception thrown when multiple batches are selected in Control Center and then “Action” button is pressed
TF-8181	Error in conversion of “purge age” setting when upgrading from older versions to V11
TF-8183	Some internal tables populated with 32-bit time values instead of 64-bit values
TF-8184	Verifier can get stuck if a popup dialog is displayed from Form_Check() VBA API function.
TF-8195	Unhandled Exception in AMP Service when printing
TF-8201	Random images left locked in “needs review” status in Verifier
TF-8207	Unable to cancel batch discard event using tfBatchUserAbort status.
TF-8223	Workstation field not correctly sorted in TeleForm Monitor Error Log
TF-8224	Auto-Export field mapping is incorrectly case-sensitive

Issue Number	Issue Description
TF-8225	Performance problem with template having very large number of fields
TF-8229	Problem with setting value of a capture zone choice list
TF-8235	Restore missing CnvFormRpt files for new installs
TF-8241	Evaluate images in order set in Scan/Classification QC
TF-8246	Login error message when user account is locked/disabled
TF-8258	Batch status does not update immediately after correction
TF-8264	Can't click last row of SKFI list field
TF-8273	Batch transfer problem with German version in V11.0
TF-8279	System fields not properly truncated when passed from batch to package/document
TF-8293	Incorrect login message for TF Stats
TF-8297	Recognition problem with upside down degraded image
TF-8305	Image within form does not display correctly when exported to 10.8/10.9 format
TF-8312	Mobile Capture throws unterminated string exception if DSS file already exists
TF-8313	Issue with OCR crash while running under Windows 10
TF-8321	Problems when upgrading from prior versions configured to use now-unsupported fax servers
TF-8322	WCO should process .dsc confirmation file and update the submit log with TF Batch ID
TF-8323	Translation issues with barcode types

Issue Number	Issue Description
TF-8326	Issues with restoring snapshots on different language OS than used to take snapshot
TF-8328	Show progress bar when opening very large form templates in Designer
TF-8329	Issue with copying images from some apps and pasting them into TeleForm Designer
TF-8338	Allow a field/column to be unmapped in when setting up an export
TF-8340	Problems switching fax options from a previous choice back to “None”.
TF-8351	SKFI/Capture Zone Date edit focus issue

7 Known issues

The following known issues exist in this release.

Issue Number	Issue Description
N/A	Documentation for some new features has not been included in the user and administration guides or online help. An overview of new features has been included in this release notes document.
N/A	The installer for the Japanese version of TeleForm is in English only.
N/A	The Receive Email and HP Digital Sender Connect Agents do not support retrieving email from Office 365 if TeleForm Reader is running as a service.

8 Contact information

OpenText Corporation
275 Frank Tompa Drive
Waterloo, Ontario
Canada, N2L 0A1

Support: <https://support.opentext.com>

Knowledge Center: <https://knowledge.opentext.com>

For more information, visit www.opentext.com