



What's new in EvaExam V7.1?

Imprint

Electric Paper Evaluationssysteme GmbH

Konrad-Zuse-Allee 13
21337 Lüneburg
Germany

Phone: +49 4131 7360 0
Telefax: +49 4131 7360 60
Email: info@evasys.de

Managing Director: Sven Meyer

USt-IdNr.: DE 179 384 158
Handelsregister: HRB-Nr. 1604, Lüneburg

Edited by Lina Frehsdorf, Dr. Iris Hille, Daniel Markgraf, Bernd Röver, Ulrike Schiefelbein


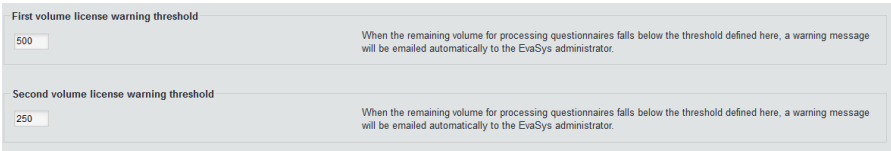
© 2017 Electric Paper Evaluationssysteme GmbH

The manual is protected by copyright.
Subject to change without notice.

This is a description of all new features in **EvaExam V7.1** including explanations of the backgrounds and possible user benefits.

The page numbers in the column “Description” refer to the descriptions of the respective features in the User Guides. The abbreviations used are the following:

- Adm. = EvaExam Administrator Manual V7.1
- Ex. = EvaExam Examiner Manual V7.1

Function	Description	Benefit
<p>Plug-in interface</p>	<p>You can now install plug-ins yourself without consulting an IT specialist. The newly added plug-in interface allows installing and configuring extensions for existing features as well as completely new user interfaces and PDF reports.</p> <p style="text-align: right;"><i>Adm. p.102</i></p> 	<p><i>Plug-ins may be developed by Electric Paper Evaluations-systeme, all partners as well as any user.</i></p> <p><i>All plug-ins developed by Electric Paper will be available in the menu “Extras”.</i></p>
<p>Automatic alerts when remaining volume license capacities decline</p>	<p>Set two cut-off points in “Settings/ Configuration/Surveys” to be alerted whenever the remaining volume license capacities fall below the defined cut-off point.</p> <p style="text-align: right;"><i>Adm. p. 111</i></p> 	<p><i>Never experience unwanted consequences caused by used volume license capacities again that could lead to the end of active evaluation processes.</i></p>

Integrated online help

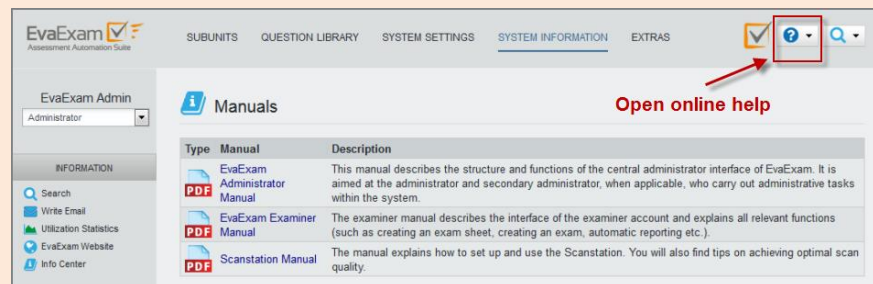
The now available online help is accessible via the browser for all administrators and examiners.

All PDF manuals will stay available in the menu "System information/ Manuals".

Now, help is available for all devices without having to download big PDF files with the manual first.

Also, all articles have been tagged and can be browsed by keywords.

Adm. p. 5
Ex p. 5



Complete point value export

The CSV Export for all points earned in the exam now also includes the first name, the last name, the email address as well as all customized fields.

Now, processing and comparing results with external tools has become even easier.

Ex p. 157 sequ.

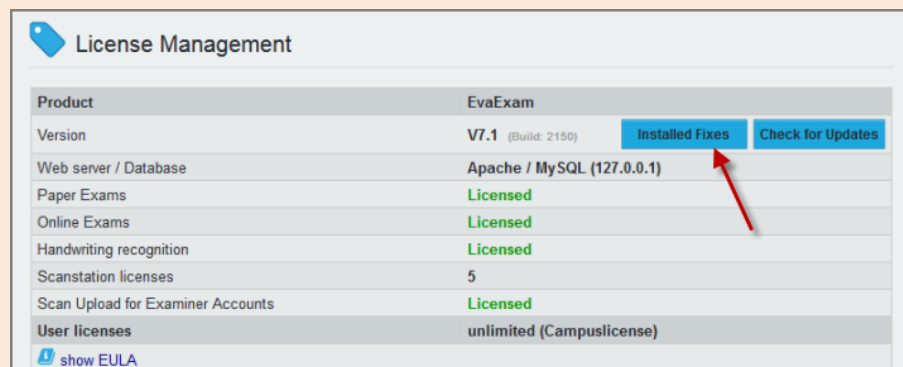
	A	B	C	D	E	F	G
1	Examinee-ID	Serial Numb	Form of Add	Title	First Name	Last name	How many p
2	12223543	1	Ms		Nicola	Doe	0
3	12234456	2	Mr.	Dr.	Axel	Miller	1
4	12234457	3	Mrs.	Dr.	Betty	Meier	1
5	12234458	4	Mrs.		Conny	Master	0
6	12234459	5	Mrs.		Doris	Smith	0
7	12234460	6	Mr.		Ernest	Sneider	1

Display of successfully installed fixes

The license management now lists the successfully installed fixes.

Check the correct installation of all fixes and report existing fixes easily to our support if needed.

Adm. p. 89



The new method called “only answer sheet”

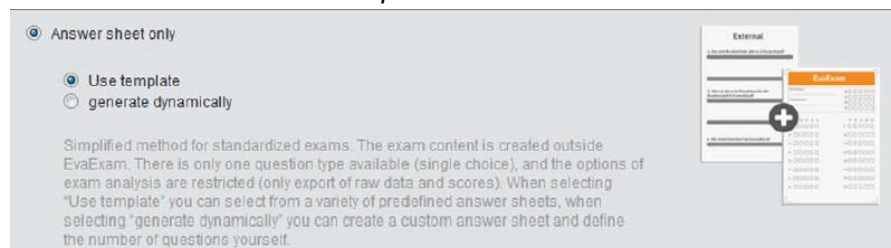
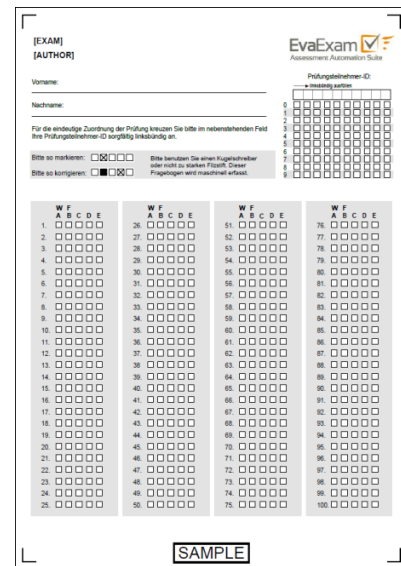
So far, users could choose between two options for surveys. One option was to print and scan questions and answers together, the other option was the answer sheet procedure where questions and answer sheets could be printed and scanned separately. In order to use the answer sheet procedure however, EvaExam required you to enter all exam questions nevertheless.

The new procedure called “only answer sheet” now allows for limited answer sheets or sheets based on a template. This is restricted to “Single Choice” questions only.

Enter an optional sample solution. After the exam, you will receive the raw data as results and a simple report based on the sample solution entered.

*Adm. p. 75 sequ.
Ex. 111 sequ.*

Generate exams in EvaExam without having to build a questionnaire in the VividForms Editor. This might be interesting if an external tool is already in use to manage the exam questions.



Remote control of exam processing

Existing exam platforms that already list exams and exam participants usually don't support Scan exams. EvaExam's SOAP-API has been extended for this purpose. All exam processes can now be fully controlled externally.

This offers a variety of possibilities including Plug-in interfaces to other Learning Management Systems.

Security improvements

The EvaExam Platform has been tested by a company specialized on penetration tests. All insights gained have influenced security improvements.

Penetration tests usually are done in regular intervals to test the latest attack mechanisms on the web servers, the data base servers as well as within the EvaExam code.

Performance improvements

Various areas have been optimized concerning their processing time.

Areas that have been optimized include the display of the subunits, the configuration bar, the question library as well as the batch events.

Transaction-based databases

The internal communication between EvaExam and the data base server has been converted to transactions. In case of unexpected errors, this even allows for more complex processes to be completely reversed.

Until now, unexpected system errors occasionally left data fragments that could trigger side effects from time to time. By shifting to transactions, these processes will become way more stable. However, this now raises the necessity for more RAM as well.